

# World Journal of *Gastroenterology*

*World J Gastroenterol* 2019 September 7; 25(33): 4796-5016



**EDITORIAL**

- 4796** Role of NLRP3 inflammasome in inflammatory bowel diseases  
*Tourkochristou E, Aggeletopoulou I, Konstantakis C, Triantos C*

**OPINION REVIEW**

- 4805** Gastroesophageal reflux disease, obesity and laparoscopic sleeve gastrectomy: The burning questions  
*Bou Daher H, Sharara AI*

**REVIEW**

- 4814** Intestinal permeability in the pathogenesis of liver damage: From non-alcoholic fatty liver disease to liver transplantation  
*Nicoletti A, Ponziani FR, Biolato M, Valenza V, Marrone G, Sganga G, Gasbarrini A, Miele L, Grieco A*
- 4835** Crosstalk network among multiple inflammatory mediators in liver fibrosis  
*Zhangdi HJ, Su SB, Wang F, Liang ZY, Yan YD, Qin SY, Jiang HX*

**MINIREVIEWS**

- 4850** Neoadjuvant radiotherapy for rectal cancer management  
*Feeney G, Sehgal R, Sheehan M, Hogan A, Regan M, Joyce M, Kerin M*
- 4870** *Helicobacter pylori* virulence genes  
*Šterbenc A, Jarc E, Poljak M, Homan M*
- 4885** Occupational exposure to vinyl chloride and liver diseases  
*Fedeli U, Girardi P, Mastrangelo G*

**ORIGINAL ARTICLE****Basic Study**

- 4892** *Ex vivo* effect of vascular wall stromal cells secretome on enteric ganglia  
*Dothel G, Bernardini C, Zannoni A, Spirito MR, Salaroli R, Bacci ML, Forni M, Ponti FD*
- 4904** Towards a standard diet-induced and biopsy-confirmed mouse model of non-alcoholic steatohepatitis: Impact of dietary fat source  
*Boland ML, Oró D, Tølbøl KS, Thrane ST, Nielsen JC, Cohen TS, Tabor DE, Fernandes F, Tovchigrechko A, Veidal SS, Warrenner P, Sellman BR, Jelsing J, Feigh M, Vrang N, Trevaskis JL, Hansen HH*
- 4921** Identification of hepatitis B virus and liver cancer bridge molecules based on functional module network  
*Huang XB, He YG, Zheng L, Feng H, Li YM, Li HY, Yang FX, Li J*

**Retrospective Cohort Study**

- 4933** Proton pump inhibitor use increases mortality and hepatic decompensation in liver cirrhosis  
*De Roza MA, Kai L, Kam JW, Chan YH, Kwek A, Ang TL, Hsiang JC*
- 4945** Prognostic value of preoperative carcinoembryonic antigen/tumor size in rectal cancer  
*Cai D, Huang ZH, Yu HC, Wang XL, Bai LL, Tang GN, Peng SY, Li YJ, Huang MJ, Cao GW, Wang JP, Luo YX*

**Retrospective Study**

- 4959** Value of controlled attenuation parameter in fibrosis prediction in nonalcoholic steatohepatitis  
*Lee JJ, Lee HW, Lee KS*
- 4970** Lymphocyte-to-monocyte ratio effectively predicts survival outcome of patients with obstructive colorectal cancer  
*Chen XQ, Xue CR, Hou P, Lin BQ, Zhang JR*

**Observational Study**

- 4985** Tenofovir is a more suitable treatment than entecavir for chronic hepatitis B patients carrying naturally occurring rtM204I mutations  
*Choe WH, Kim K, Lee SY, Choi YM, Kwon SY, Kim JH, Kim BJ*

**META-ANALYSIS**

- 4999** Efficacy of *Lactobacillus rhamnosus* GG in treatment of acute pediatric diarrhea: A systematic review with meta-analysis  
*Li YT, Xu H, Ye JZ, Wu WR, Shi D, Fang DQ, Liu Y, Li LJ*

**ABOUT COVER**

Editorial board member of *World Journal of Gastroenterology*, Amedeo Lonardo, MD, Doctor, Senior Lecturer, Department of Biomedical, Metabolic and Neural Sciences, University of Modena and Reggio Emilia, Modena 41126, Italy

**AIMS AND SCOPE**

*World Journal of Gastroenterology* (*World J Gastroenterol*, *WJG*, print ISSN 1007-9327, online ISSN 2219-2840, DOI: 10.3748) is a peer-reviewed open access journal. The *WJG* Editorial Board consists of 701 experts in gastroenterology and hepatology from 58 countries.

The primary task of *WJG* is to rapidly publish high-quality original articles, reviews, and commentaries in the fields of gastroenterology, hepatology, gastrointestinal endoscopy, gastrointestinal surgery, hepatobiliary surgery, gastrointestinal oncology, gastrointestinal radiation oncology, etc. The *WJG* is dedicated to become an influential and prestigious journal in gastroenterology and hepatology, to promote the development of above disciplines, and to improve the diagnostic and therapeutic skill and expertise of clinicians.

**INDEXING/ABSTRACTING**

The *WJG* is now indexed in Current Contents®/Clinical Medicine, Science Citation Index Expanded (also known as SciSearch®), Journal Citation Reports®, Index Medicus, MEDLINE, PubMed, PubMed Central, and Scopus. The 2019 edition of Journal Citation Report® cites the 2018 impact factor for *WJG* as 3.411 (5-year impact factor: 3.579), ranking *WJG* as 35<sup>th</sup> among 84 journals in gastroenterology and hepatology (quartile in category Q2). CiteScore (2018): 3.43.

**RESPONSIBLE EDITORS FOR THIS ISSUE**

Responsible Electronic Editor: *Yu-Jie Ma*

Proofing Production Department Director: *Yun-Xiaojuan Wu*

**NAME OF JOURNAL**

*World Journal of Gastroenterology*

**ISSN**

ISSN 1007-9327 (print) ISSN 2219-2840 (online)

**LAUNCH DATE**

October 1, 1995

**FREQUENCY**

Weekly

**EDITORS-IN-CHIEF**

Subrata Ghosh, Andrzej S Tarnawski

**EDITORIAL BOARD MEMBERS**

<http://www.wjgnet.com/1007-9327/editorialboard.htm>

**EDITORIAL OFFICE**

Ze-Mao Gong, Director

**PUBLICATION DATE**

September 7, 2019

**COPYRIGHT**

© 2019 Baishideng Publishing Group Inc

**INSTRUCTIONS TO AUTHORS**

<https://www.wjgnet.com/bpg/gerinfo/204>

**GUIDELINES FOR ETHICS DOCUMENTS**

<https://www.wjgnet.com/bpg/GerInfo/287>

**GUIDELINES FOR NON-NATIVE SPEAKERS OF ENGLISH**

<https://www.wjgnet.com/bpg/gerinfo/240>

**PUBLICATION MISCONDUCT**

<https://www.wjgnet.com/bpg/gerinfo/208>

**ARTICLE PROCESSING CHARGE**

<https://www.wjgnet.com/bpg/gerinfo/242>

**STEPS FOR SUBMITTING MANUSCRIPTS**

<https://www.wjgnet.com/bpg/GerInfo/239>

**ONLINE SUBMISSION**

<https://www.f6publishing.com>



## Gastroesophageal reflux disease, obesity and laparoscopic sleeve gastrectomy: The burning questions

Halim Bou Daher, Ala I Sharara

**ORCID number:** Halim Bou Daher (0000-0001-8565-705X); Ala I Sharara (0000-0003-0248-9527).

**Author contributions:** Sharara AI conceived the idea for the manuscript; Bou Daher H and Sharara AI reviewed the literature and drafted the manuscript.

**Conflict-of-interest statement:** The authors declare no conflict of interests.

**Open-Access:** This article is an open-access article which was selected by an in-house editor and fully peer-reviewed by external reviewers. It is distributed in accordance with the Creative Commons Attribution Non Commercial (CC BY-NC 4.0) license, which permits others to distribute, remix, adapt, build upon this work non-commercially, and license their derivative works on different terms, provided the original work is properly cited and the use is non-commercial. See: <http://creativecommons.org/licenses/by-nc/4.0/>

**Manuscript source:** Invited manuscript

**Received:** February 27, 2019

**Peer-review started:** February 27, 2019

**First decision:** April 30, 2019

**Revised:** August 3, 2019

**Accepted:** August 19, 2019

**Article in press:** August 19, 2019

**Published online:** September 7, 2019

**P-Reviewer:** Liu F

**S-Editor:** Yan JP

**Halim Bou Daher, Ala I Sharara,** Division of Gastroenterology, Department of Internal Medicine, American University of Beirut Medical Center, Beirut 1107 2020, Lebanon

**Corresponding author:** Ala I Sharara, AGAF, FACG, FRCP, MD, Professor, Division of Gastroenterology, Department of Internal Medicine, American University of Beirut Medical Center, Cairo Street, P.O. Box 11-0236/16-B, Beirut 1107 2020, Lebanon.

[ala.sharara@aub.edu.lb](mailto:ala.sharara@aub.edu.lb)

**Telephone:** +961-1-3500005351

### Abstract

Obesity is a global health epidemic with considerable economic burden. Surgical solutions have become increasingly popular following technical advances leading to sustained efficacy and reduced risk. Sleeve gastrectomy accounts for almost half of all bariatric surgeries worldwide but concerns regarding its relationship with gastroesophageal reflux disease (GERD) has been a topic of debate. GERD, including erosive esophagitis, is highly prevalent in the obese population. The role of pre-operative endoscopy in bariatric surgery has been controversial. Two schools of thought exist on the matter, one that believes routine upper endoscopy before bariatric surgery is not warranted in the absence of symptoms and another that believes that symptoms are poor predictors of underlying esophageal pathology. This debate is particularly important considering the evidence for the association of laparoscopic sleeve gastrectomy (LSG) with *de novo* and/or worsening GERD compared to the less popular Roux-en-Y gastric bypass procedure. In this paper, we try to address 3 burning questions regarding the inter-relationship of obesity, GERD, and LSG: (1) What is the prevalence of GERD and erosive esophagitis in obese patients considered for bariatric surgery? (2) Is it necessary to perform an upper endoscopy in obese patients considered for bariatric surgery? And (3) What are the long-term effects of sleeve gastrectomy on GERD and should LSG be done in patients with pre-existing GERD?

**Key words:** Reflux; Erosive; Acid; Bariatric; Obesity; Gastric bypass; Endoscopy

©The Author(s) 2019. Published by Baishideng Publishing Group Inc. All rights reserved.

**Core tip:** The convenience and ease of sleeve gastrectomy comes at a risk of *de novo* or worsening of pre-existing gastroesophageal reflux disease. Candidates for bariatric surgery should have a thorough evaluation of reflux symptoms as well as esophageal anatomy and pathology. This should be followed by an informed and open discussion with the patient about risks and benefits of different bariatric surgical options leading to



L-Editor: A

E-Editor: Ma YJ



optimal shared decision making.

**Citation:** Bou Daher H, Sharara AI. Gastroesophageal reflux disease, obesity and laparoscopic sleeve gastrectomy: The burning questions. *World J Gastroenterol* 2019; 25(33): 4805-4813

**URL:** <https://www.wjgnet.com/1007-9327/full/v25/i33/4805.htm>

**DOI:** <https://dx.doi.org/10.3748/wjg.v25.i33.4805>

## INTRODUCTION

Obesity is a modern-day global epidemic with significant health and economic burden. According to the World Health Organization, 650 million adults (13% of all adults) and over 340 million children and adolescents are overweight or obese<sup>[1]</sup>. In light of the oft-disappointing long-term results of medical and behavioral interventions, an increasingly larger number of obese patients are turning to minimally invasive bariatric surgery. According to the American Society for Metabolic and Bariatric Surgery, approximately 216000 individuals underwent bariatric surgery in 2016 in the United States, a net increase of 36.7% over a five-year period starting in 2011<sup>[2]</sup>. Laparoscopic sleeve gastrectomy (LSG) is currently the most popular procedure accounting for more than 50% to 60% of bariatric surgeries worldwide<sup>[2,3]</sup>. Two recent large randomized trials have confirmed that there is no significant difference in excess weight loss between LSG and laparoscopic Roux-en-Y gastric bypass (RYGB) at 5 years of follow-up<sup>[4,5]</sup>. However, enthusiasm for this relatively simple procedure has been curtailed by concerns of post-operative gastroesophageal reflux disease (GERD), as a result of either persistent or *de novo* reflux<sup>[2]</sup>. This remains an issue of significant controversy and active debate in clinical practice. At the Fifth International Consensus Conference on LSG, 52.5% of general surgeons and 23.3% of bariatric experts considered GERD a contraindication to LSG<sup>[6]</sup>. This article will address 3 burning questions concerning the inter-relationship between obesity, GERD, and LSG.

## WHAT IS THE PREVALENCE OF GERD AND EROSIVE ESOPHAGITIS IN OBESE PATIENTS CONSIDERED FOR BARIATRIC SURGERY?

Obesity is an important risk factor for GERD and is associated with esophageal complications such as erosive esophagitis (EE), Barrett's esophagus, and esophageal adenocarcinoma<sup>[7,8]</sup>. GERD has been reported in as many as 62.4% to 73% of bariatric surgery candidates<sup>[9,10]</sup>. The pathophysiological mechanisms predisposing to GERD in obesity include increased intra-abdominal pressure<sup>[11]</sup>, impaired gastric emptying<sup>[12]</sup>, decreased lower esophageal sphincter (LES) pressure, and higher frequency of transient LES relaxation<sup>[13,14]</sup>. In addition, a higher prevalence of hiatal hernia has been described in obese individuals<sup>[15]</sup>. Central obesity, rather than body mass index (BMI), is more closely associated with GERD<sup>[7,16]</sup>. High-resolution manometry suggests that both intragastric pressure and gastroesophageal pressure gradient correlate primarily with waist circumference<sup>[10]</sup>.

Overweight and obesity (especially abdominal visceral obesity) are also risk factors for EE. EE is associated with higher distal acid exposure time (percentage time with pH < 4) and higher percentage of reflux episodes reaching the proximal esophagus<sup>[17]</sup>. El-Serag *et al*<sup>[7]</sup> showed that patients with a BMI > 30 are 2.5 times more likely to have reflux symptoms and EE than those with a normal BMI. A meta-analysis of 6 studies showed that the adjusted risk ratio for EE was 1.76 in patients with BMI > 25 compared to those with BMI < 25<sup>[18]</sup>. Prospective endoscopic studies in bariatric surgery candidates have documented a high prevalence of EE in obese individuals ranging from 4.2% to 33.9% (Table 1)<sup>[9-11,19-25]</sup>. Risk factors for EE varied between studies and included increased waist circumference, insulin resistance, and presence of reflux symptoms<sup>[11]</sup>. It is important to note that the absence of symptoms does not exclude erosive disease. In one study, 12.3% of obese patients with low probability of reflux symptoms (low GERDQ score < 8) had EE<sup>[9]</sup>. The literature is conclusive on the matter: Obesity is associated with higher prevalence of GERD and erosive esophagitis.

**Table 1** Prospective studies on the prevalence of erosive esophagitis in obese patients

Publication	Year	Number of subjects	Prevalence of EE (%)	Comments
Verset <i>et al</i> <sup>[18]</sup>	1997	147	30.6	High incidence of peptic lesions that were mainly asymptomatic
Ortiz <i>et al</i> <sup>[9]</sup>	2006	138	18.8	Sensitivity of heartburn as diagnostic criterion of GERD was 29.3%, with a specificity of 85.7%  Asymptomatic GER (abnormal esophageal acid exposure and/or EE) more common than symptomatic GER
Csendes <i>et al</i> <sup>[10]</sup>	2007	426	26.3	Out of the 112 EE patients, 77 (68.7%) reported GERD symptoms
Merrouche <i>et al</i> <sup>[11]</sup>	2007	94	6.4	46% of patients had abnormal 24-pH study
Dutta <i>et al</i> <sup>[19]</sup>	2009	101	8.9	6.9% EE in age- and sex-matched non-obese control subjects
Tai <i>et al</i> <sup>[20]</sup>	2010	260	32.3	Increased waist circumference, insulin resistance, and presence of reflux symptoms independent risk factors for EE
Martin-Perez <i>et al</i> <sup>[21]</sup>	2014	88	4.5	Esophageal pH monitoring tests positive in 65% of patients  Absence of symptoms did not rule out abnormal esophageal function tests
Carabotti <i>et al</i> <sup>[24]</sup>	2015	142	4.2	Majority of endoscopic lesions were asymptomatic
Mora <i>et al</i> <sup>[23]</sup>	2016	196	17.3	Esophageal pH-metry abnormal in 54.2% of patients  Symptoms not enough to diagnose underlying GERD or EE
Sharara <i>et al</i> <sup>[24]</sup>	2019	242	33.9	Anthropometric data and GERD questionnaires have limited accuracy for EE  12.3% of patients with low GERDQ (< 8) had EE

GERD: Gastroesophageal reflux disease; EE: Erosive esophagitis.

## IS IT NECESSARY TO DO AN UPPER ENDOSCOPY IN OBESE PATIENTS CONSIDERED FOR BARIATRIC SURGERY?

Clinical practice guidelines published in 2013 by the American Association of Clinical Endocrinologists, The Obesity Society, and American Society for Metabolic and Bariatric Surgery recommend preoperative endoscopy only when clinically indicated<sup>[26]</sup>. This is in line with the Society of American Gastrointestinal and Endoscopic Surgeons (SAGES) 2008 guidelines and the 2014 interdisciplinary European guidelines endorsed by the International Federation for the Surgery of Obesity and Metabolic Disorders-European Chapter and European Association for the Study of Obesity<sup>[27]</sup>. On the other hand, the 2015 ASGE guidelines recommend that the decision be individualized<sup>[28]</sup> while the European Association of Endoscopic Surgeons advises that all patients be evaluated by either endoscopy or upper gastrointestinal series prior to their bariatric surgery<sup>[29]</sup>. In short, the jury is still out on the matter and a consensus between international and national societies seems unlikely. In a recent series of 1555 patients, asymptomatic patients with significant findings on endoscopy

did not require a change in management or surgery<sup>[30]</sup>. The authors went on to conclude that routine upper endoscopy requires further justifications for asymptomatic patients. On the other hand, several recent studies emphasized the importance of doing an upper endoscopy preoperatively<sup>[23-25]</sup>. Carabotti *et al*<sup>[24]</sup> showed that the incidence of endoscopic lesions was the same between patients who reported symptoms and those who did not; the study also concluded that with the current adopted approach to preoperative endoscopy, 87% of EE cases would have been missed. In our experience, we had similar outcomes when we administered the GERD-Q and the Nocturnal GERD Symptom Severity and Impact Questionnaire (N-GSSIQ) to more than 240 consecutive unselected patients scheduled for bariatric surgery. These validated scores were poorly predictive of endoscopically-proven EE in these patients, even when combined with clinical assessment as part of a composite score<sup>[9]</sup>. As mentioned earlier, the absence of symptoms does not rule out the presence of GERD<sup>[9,23]</sup>. A recent survey conducted in the United Kingdom showed that 90% of bariatric units perform preoperative upper endoscopy either routinely or selectively<sup>[31]</sup>. However, there is also no clear consensus on the indications amongst those who do it selectively. This is particularly important in patients considered for LSG given the evidence linking it to worsening GERD and PPI dependence<sup>[32-34]</sup>. The reason so much debate surrounds the issue is because significant GERD plays a major role in the choice of the bariatric procedure and the presence of per-operative reflux symptoms appears to be associated with post-operative GERD<sup>[35]</sup>. In the absence of proper randomized trials and dedicated large long-term follow-up studies, the impact of baseline GERD as well as its post-operative risk should be thoroughly discussed with the patient to help guide the choice of the bariatric procedure. We recommend routine upper endoscopy for all patients scheduled to undergo bariatric surgery to assist with this shared decision process.

## WHAT ARE THE LONG-TERM EFFECTS OF SLEEVE GASTRECTOMY ON GERD? AND SHOULD LSG BE DONE IN PATIENTS WITH PRE-EXISTING GERD?

Several short-term (less than 2 years) follow-up studies have looked at the effect of sleeve gastrectomy on GERD. Some have shown improvement of GERD symptoms after LSG<sup>[36-40]</sup> while others reported worsening and *de novo* GERD<sup>[41-45]</sup>. Few studies have objectively evaluated the presence of pathologic reflux by 24-h multichannel intraluminal impedance pH monitoring at  $\geq 12$  mo after LSG reporting conflicting results<sup>[46-50]</sup>. A systematic review and meta-analysis was inconclusive reporting “high heterogeneity among available studies and paradoxical outcomes of objective esophageal function tests”<sup>[32]</sup>. Recently, two large randomized controlled trials were published comparing the 5-year follow-up outcome of LSG and RYGB<sup>[4,5]</sup>. The SM-BOSS trial reported 5-year postoperative GERD remission in 25% in the LSG group compared to 60.4% in RYGB ( $P = 0.002$ ) with *de novo* GERD in 31.6% of LSG patients compared to 10.7% in RYGB patients ( $P = 0.01$ ). The study also reported that 9% of LSG patients had to undergo conversion to RYGB because of GERD (highest reason for conversion in the study population). The SLEEVEPASS trial reported RYGB conversion in 6% due to reflux (the study excluded patients with “severe gastroesophageal reflux with a large hiatal hernia”). These figures are consistent with previous literature that showed a 5%-10% conversion rate from LSG to RYGB due to GERD<sup>[35,51]</sup>. A systematic review published in 2016 demonstrated that 8 out of 10 studies showed new onset GERD at long-term follow up after LSG with a range of 10% to 23%<sup>[52]</sup>. A prospective study by Genco *et al.* of 110 LSG patients followed over a mean of 58 months showed that the incidence of GERD symptoms, EE and PPI intake increased significantly post-operatively. Upward migration of the GEJ Z-line was found in 73.6% of cases on follow-up endoscopy. What was most alarming in this study was the fact that non-dysplastic Barrett's esophagus was newly diagnosed in 17.2% of patients. This finding has been duplicated in another recent small multicenter study from Italy<sup>[53]</sup>.

The lines of evidence supporting that LSG is a refluxogenic procedure are multiple and include the observation of increased intragastric pressure and impedance reflux episodes on high-resolution impedance manometry after LSG<sup>[54]</sup>, significant increase in non-acidic reflux with stasis and acidification in esophagus, and the higher rate of *de novo* reflux in cohort studies and in randomized controlled studies compared to RYGB. In a rat model, LSG was independently associated with histopathologic changes of severe esophagitis compared to high-fat diet fed and to sham-operated rats<sup>[55]</sup>. The putative pathophysiological mechanisms underlying GERD after LSG are summarized in Table 2<sup>[49,56-62]</sup>. They include a hypotensive LES, loss of angle of His flap



valve, increased gastroesophageal pressure gradient with intra-thoracic migration of the remnant stomach, reduction in the compliance of the gastric remnant provoking an increase in transient LES relaxations, relative gastric stasis in the proximal remnant and increased emptying from the antrum, stasis and acidification in the esophagus, as well as higher intragastric pressure and increased impedance reflux episodes. **Figure 1** showcases some of the endoscopic and radiologic findings of GERD post LSG.

Given the evidence for long-term GERD burden post LSG, the 2015 joint statement by the ASMBBS, SAGES and ASGE considered EE as a relative contraindication to the surgery<sup>[28]</sup>. A recent prospective study showed that the presence of pre-operative GERD symptoms and EE at baseline were independently associated with a higher need of postoperative PPI use at 6 mo after LSG<sup>[34]</sup>. The totality of the evidence suggests that LSG is associated with an increased incidence of GERD. While some obese patients with mild non-erosive reflux disease may benefit from LSG with resolution of GERD symptoms after weight loss, those with severe reflux and erosive disease appear to have a high probability of persistent GERD. The opportunity to save such patients from persistent gastroesophageal reflux, PPI dependence, and possible revisional surgery should be seized and the available evidence openly discussed with the patient.

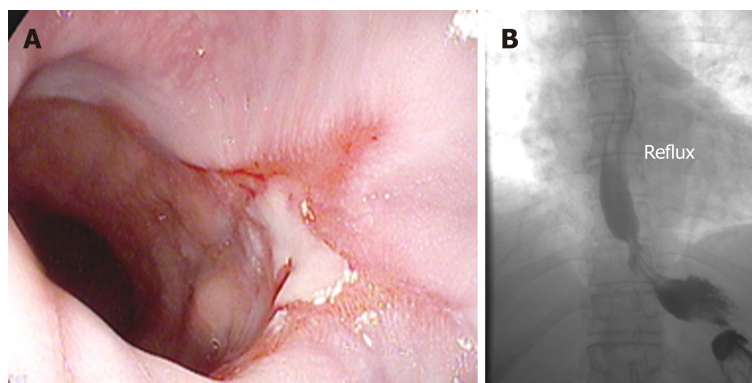
## CONCLUSION

The popularity of sleeve gastrectomy derives mainly from its relative ease, safety and efficacy. The “Achilles heel” of this procedure appears to be gastroesophageal reflux and its complications. This is an issue of concern particularly for patients with pre-existing GERD or EE. As physicians, we have a duty not to cause harm. We believe that a thorough evaluation of reflux symptoms as well as esophageal anatomy and pathology should be systematically undertaken in all patients considered for bariatric surgery. This should be followed by an informed and open discussion with the patient about risks and benefits of different bariatric surgical options leading to optimal shared decision making.

**Table 2 Putative pathophysiological mechanisms of gastroesophageal reflux disease post laparoscopic sleeve gastrectomy**

Hypotensive lower esophageal sphincter <sup>[48]</sup>
Loss of angle of His flap valve <sup>[55]</sup>
Increased gastro-esophageal pressure gradient and intra-thoracic migration of the remnant stomach <sup>[56]</sup>
Reduction in the compliance of the gastric remnant provoking an increase in transient lower esophageal sphincter relaxations <sup>[57]</sup>
Lack of gastric compliance and emptying during the first postoperative year <sup>[58]</sup>
Relative gastric stasis in the proximal remnant and increased emptying from the antrum (suggested on time-resolved MRI studies) <sup>[59]</sup>
Excessively large or dilated sleeve retaining increased acid production capacity leading to reflux <sup>[60]</sup>
Overly narrowed or strictured sleeve resulting in reflux and decreased esophageal acid clearance <sup>[61]</sup>

MRI: Magnetic resonance imaging.



**Figure 1 Erosive esophagitis and gastroesophageal reflux.** A: Erosive esophagitis in a patient with *de novo* reflux symptoms post laparoscopic sleeve gastrectomy; B: Barium upper gastrointestinal series demonstrating gastroesophageal reflux in a patient post laparoscopic sleeve gastrectomy.

## REFERENCES

- 1 **World Health Organization.** Obesity and overweight. Fact Sheets. 2018; Available from: <https://www.who.int/news-room/fact-sheets/detail/obesity-and-overweight>
- 2 **English WJ, DeMaria EJ, Brethauer SA, Mattar SG, Rosenthal RJ, Morton JM.** American Society for Metabolic and Bariatric Surgery estimation of metabolic and bariatric procedures performed in the United States in 2016. *Surg Obes Relat Dis* 2018; **14**: 259-263 [PMID: 29370995 DOI: 10.1016/j.soard.2017.12.013]
- 3 **Angrisani L, Santonicola A, Iovino P, Vitiello A, Zundel N, Buchwald H, Scopinaro N.** Bariatric Surgery and Endoluminal Procedures: IFSO Worldwide Survey 2014. *Obes Surg* 2017; **27**: 2279-2289 [PMID: 28405878 DOI: 10.1007/s11695-017-2666-x]
- 4 **Peterli R, Wölnerhanssen BK, Peters T, Vetter D, Kröll D, Borbély Y, Schultes B, Beglinger C, Drewe J, Schiesser M, Nett P, Bueter M.** Effect of Laparoscopic Sleeve Gastrectomy vs Laparoscopic Roux-en-Y Gastric Bypass on Weight Loss in Patients With Morbid Obesity: The SM-BOSS Randomized Clinical Trial. *JAMA* 2018; **319**: 255-265 [PMID: 29340679 DOI: 10.1001/jama.2017.20897]
- 5 **Salminen P, Helmiö M, Ovaska J, Juuti A, Leivonen M, Peromaa-Haavisto P, Hurme S, Soinio M, Nuutila P, Victorzon M.** Effect of Laparoscopic Sleeve Gastrectomy vs Laparoscopic Roux-en-Y Gastric Bypass on Weight Loss at 5 Years Among Patients With Morbid Obesity: The SLEEVEPASS Randomized Clinical Trial. *JAMA* 2018; **319**: 241-254 [PMID: 29340676 DOI: 10.1001/jama.2017.20313]
- 6 **Gagner M, Hutchinson C, Rosenthal R.** Fifth International Consensus Conference: Current status of sleeve gastrectomy. *Surg Obes Relat Dis* 2016; **12**: 750-756 [PMID: 27178618 DOI: 10.1016/j.soard.2016.01.022]
- 7 **El-Serag HB, Graham DY, Satia JA, Rabeneck L.** Obesity is an independent risk factor for GERD symptoms and erosive esophagitis. *Am J Gastroenterol* 2005; **100**: 1243-1250 [PMID: 15929752 DOI: 10.1111/j.1572-0241.2005.41703.x]
- 8 **El-Serag HB.** Obesity and disease of the esophagus and colon. *Gastroenterol Clin North Am* 2005; **34**: 63-82 [PMID: 15823439 DOI: 10.1016/j.gtc.2004.12.006]
- 9 **Sharara AI, Rustom LBO, Bou Daher H, Rimmani HH, Shayto RH, Minhem M, Ichkhanian Y, Aridi H, Al-Abbas A, Shaib Y, Alami R, Safadi B.** Prevalence of gastroesophageal reflux and risk factors for erosive esophagitis in obese patients considered for bariatric surgery. *Dig Liver Dis* 2019; pii: S1590-8658(19)30550-X [PMID: 31076325 DOI: 10.1016/j.dld.2019.04.010]
- 10 **Merrouche M, Sabaté JM, Jouet P, Harnois F, Scaringi S, Coffin B, Msika S.** Gastro-esophageal reflux and esophageal motility disorders in morbidly obese patients before and after bariatric surgery. *Obes Surg* 2007; **17**: 894-900 [PMID: 17894148 DOI: 10.1007/s11695-007-9166-3]
- 11 **Tai CM, Lee YC, Tu HP, Huang CK, Wu MT, Chang CY, Lee CT, Wu MS, Lin JT, Wang WM.** The relationship between visceral adiposity and the risk of erosive esophagitis in severely obese Chinese patients. *Obesity (Silver Spring)* 2010; **18**: 2165-2169 [PMID: 20559298 DOI: 10.1038/oby.2010.143]
- 12 **Pandolfino JE, Kwiatek MA, Kahrilas PJ.** The pathophysiologic basis for epidemiologic trends in

- gastroesophageal reflux disease. *Gastroenterol Clin North Am* 2008; **37**: 827-843, viii [PMID: [19028320](#) DOI: [10.1016/j.gtc.2008.09.009](#)]
- 13 **El-Serag HB**, Tran T, Richardson P, Ergun G. Anthropometric correlates of intragastric pressure. *Scand J Gastroenterol* 2006; **41**: 887-891 [PMID: [16803686](#) DOI: [10.1080/00365520500535402](#)]
  - 14 **El-Serag HB**, Ergun GA, Pandolfino J, Fitzgerald S, Tran T, Kramer JR. Obesity increases oesophageal acid exposure. *Gut* 2007; **56**: 749-755 [PMID: [17127706](#) DOI: [10.1136/gut.2006.100263](#)]
  - 15 **Wilson LJ**, Ma W, Hirschowitz BI. Association of obesity with hiatal hernia and esophagitis. *Am J Gastroenterol* 1999; **94**: 2840-2844 [PMID: [10520831](#) DOI: [10.1111/j.1572-0241.1999.01426.x](#)]
  - 16 **Ze EY**, Kim BJ, Kang H, Kim JG. Abdominal Visceral to Subcutaneous Adipose Tissue Ratio Is Associated with Increased Risk of Erosive Esophagitis. *Dig Dis Sci* 2017; **62**: 1265-1271 [PMID: [28281164](#) DOI: [10.1007/s10620-017-4467-4](#)]
  - 17 **Savarino E**, Tutuian R, Zentilin P, Dulbecco P, Pohl D, Marabotto E, Parodi A, Sammito G, Gemignani L, Bodini G, Savarino V. Characteristics of reflux episodes and symptom association in patients with erosive esophagitis and nonerosive reflux disease: Study using combined impedance-pH off therapy. *Am J Gastroenterol* 2010; **105**: 1053-1061 [PMID: [19997095](#) DOI: [10.1038/ajg.2009.670](#)]
  - 18 **Hampel H**, Abraham NS, El-Serag HB. Meta-analysis: Obesity and the risk for gastroesophageal reflux disease and its complications. *Ann Intern Med* 2005; **143**: 199-211 [PMID: [16061918](#) DOI: [10.7326/0003-4819-143-3-200508020-00006](#)]
  - 19 **Ortiz V**, Ponce M, Fernández A, Martínez B, Ponce JL, Garrigues V, Ponce J. Value of heartburn for diagnosing gastroesophageal reflux disease in severely obese patients. *Obesity (Silver Spring)* 2006; **14**: 696-700 [PMID: [16741272](#) DOI: [10.1038/oby.2006.79](#)]
  - 20 **Csendes A**, Burgos AM, Smok G, Beltran M. Endoscopic and histologic findings of the foregut in 426 patients with morbid obesity. *Obes Surg* 2007; **17**: 28-34 [PMID: [17355765](#) DOI: [10.1007/s11695-007-9002-9](#)]
  - 21 **Verset D**, Houben JJ, Gay F, Elcheroth J, Bourgeois V, Van Gossum A. The place of upper gastrointestinal tract endoscopy before and after vertical banded gastroplasty for morbid obesity. *Dig Dis Sci* 1997; **42**: 2333-2337 [PMID: [9398814](#) DOI: [10.1023/A:1018835205458](#)]
  - 22 **Dutta SK**, Arora M, Kireet A, Bashandy H, Gandsas A. Upper gastrointestinal symptoms and associated disorders in morbidly obese patients: A prospective study. *Dig Dis Sci* 2009; **54**: 1243-1246 [PMID: [18975090](#) DOI: [10.1007/s10620-008-0485-6](#)]
  - 23 **Martín-Pérez J**, Arteaga-González I, Martín-Malagón A, Díaz-Luis H, Casanova-Trujillo C, Carrillo-Pallarés A A. Frequency of abnormal esophageal acid exposure in patients eligible for bariatric surgery. *Surg Obes Relat Dis* 2014; **10**: 1176-1180 [PMID: [25443048](#) DOI: [10.1016/j.soard.2014.04.011](#)]
  - 24 **Carabotti M**, Avallone M, Cereatti F, Paganini A, Greco F, Scirocco A, Severi C, Silecchia G. Usefulness of Upper Gastrointestinal Symptoms as a Driver to Prescribe Gastrosocopy in Obese Patients Candidate to Bariatric Surgery. A Prospective Study. *Obes Surg* 2016; **26**: 1075-1080 [PMID: [26328530](#) DOI: [10.1007/s11695-015-1861-x](#)]
  - 25 **Mora F**, Cassinello N, Mora M, Bosca M, Minguez M, Ortega J. Esophageal abnormalities in morbidly obese adult patients. *Surg Obes Relat Dis* 2016; **12**: 622-628 [PMID: [26686303](#) DOI: [10.1016/j.soard.2015.08.002](#)]
  - 26 **Mechanick JI**, Youdim A, Jones DB, Timothy Garvey W, Hurley DL, Molly McMahon M, Heinberg LJ, Kushner R, Adams TD, Shikora S, Dixon JB, Brethauer S. Clinical practice guidelines for the perioperative nutritional, metabolic, and nonsurgical support of the bariatric surgery patient--2013 update: Cosponsored by American Association of Clinical Endocrinologists, the Obesity Society, and American Society for Metabolic & Bariatric Surgery. *Surg Obes Relat Dis* 2013; **9**: 159-191 [PMID: [23537696](#) DOI: [10.1016/j.soard.2012.12.010](#)]
  - 27 **Fried M**, Yumuk V, Oppert JM, Scopinaro N, Torres A, Weiner R, Yashkov Y, Frühbeck G; International Federation for Surgery of Obesity and Metabolic Disorders-European Chapter (IFSO-EC); European Association for the Study of Obesity (EASO); European Association for the Study of Obesity Obesity Management Task Force (EASO OMTF). Interdisciplinary European guidelines on metabolic and bariatric surgery. *Obes Surg* 2014; **24**: 42-55 [PMID: [24081459](#) DOI: [10.1007/s11695-013-1079-8](#)]
  - 28 **Evans JA**, Muthusamy VR, Acosta RD, Bruining DH, Chandrasekhara V, Chathadi KV, Eloubeidi MA, Fanelli RD, Faulx AL, Fonkalsrud L, Khashab MA, Lightdale JR, Pasha SF, Saltzman JR, Shaikat A, Wang A, Stefanidis D, Richardson WS, Khothari SN, Cash BD; ASGE Standards of Practice Committee. The role of endoscopy in the bariatric surgery patient. *Surg Obes Relat Dis* 2015; **11**: 507-517 [PMID: [26093766](#) DOI: [10.1016/j.soard.2015.02.015](#)]
  - 29 **Sauerland S**, Angrisani L, Belachew M, Chevallier JM, Favretti F, Finer N, Fingerhut A, Garcia Caballero M, Guisado Macias JA, Mittermair R, Morino M, Msika S, Rubino F, Tacchino R, Weiner R, Neugebauer EA; European Association for Endoscopic Surgery (EAES). Obesity surgery: Evidence-based guidelines of the European Association for Endoscopic Surgery (EAES). *Surg Endosc* 2005; **19**: 200-221 [PMID: [15580436](#) DOI: [10.1007/s00464-004-9194-1](#)]
  - 30 **Salama A**, Saafan T, El Ansari W, Karam M, Bashah M. Is Routine Preoperative Esophagogastroduodenoscopy Screening Necessary Prior to Laparoscopic Sleeve Gastrectomy? Review of 1555 Cases and Comparison with Current Literature. *Obes Surg* 2018; **28**: 52-60 [PMID: [28685362](#) DOI: [10.1007/s11695-017-2813-4](#)]
  - 31 **Zanotti D**, Elkalaawy M, Hashemi M, Jenkinson A, Adamo M. Current Status of Preoperative Oesophago-Gastro-Duodenoscopy (OGD) in Bariatric NHS Units-a BOMSS Survey. *Obes Surg* 2016; **26**: 2257-2262 [PMID: [27424002](#) DOI: [10.1007/s11695-016-2304-z](#)]
  - 32 **Oor JE**, Roks DJ, Ünlü Ç, Hazebroek EJ. Laparoscopic sleeve gastrectomy and gastroesophageal reflux disease: A systematic review and meta-analysis. *Am J Surg* 2016; **211**: 250-267 [PMID: [26341463](#) DOI: [10.1016/j.amjsurg.2015.05.031](#)]
  - 33 **Felsenreich DM**, Kefurt R, Schermann M, Beckerhinn P, Kristo I, Krebs M, Prager G, Langer FB. Reflux, Sleeve Dilation, and Barrett's Esophagus after Laparoscopic Sleeve Gastrectomy: Long-Term Follow-Up. *Obes Surg* 2017; **27**: 3092-3101 [PMID: [28593484](#) DOI: [10.1007/s11695-017-2748-9](#)]
  - 34 **Sharara AI**, Rimmani HH, Al Abbas AI, Safadi B, Shayto RH, Aridi H, Shaib Y, R. Erosive esophagitis is prevalent and Predictable by pre-operative gerdq questionnaire in Obese individuals and is associated with the need for Continued ppi use after laparoscopic sleeve Gastrectomy. UEG Week 2017 Oral Presentations. *United Eur Gastroent* 2017; **5**: A1-A160 [DOI: [10.1177/2050640617725668](#)]
  - 35 **Madhok BM**, Carr WR, McCormack C, Boyle M, Jennings N, Schroeder N, Balupuri S, Small PK. Preoperative endoscopy may reduce the need for revisional surgery for gastro-oesophageal reflux disease following laparoscopic sleeve gastrectomy. *Clin Obes* 2016; **6**: 268-272 [PMID: [27400631](#) DOI: [10.1007/s11695-017-2748-9](#)]

- 10.1111/cob.12153]
- 36 **Cottam D**, Qureshi FG, Mattar SG, Sharma S, Holover S, Bonanomi G, Ramanathan R, Schauer P. Laparoscopic sleeve gastrectomy as an initial weight-loss procedure for high-risk patients with morbid obesity. *Surg Endosc* 2006; **20**: 859-863 [PMID: [16738970](#) DOI: [10.1007/s00464-005-0134-5](#)]
  - 37 **Moon Han S**, Kim WW, Oh JH. Results of laparoscopic sleeve gastrectomy (LSG) at 1 year in morbidly obese Korean patients. *Obes Surg* 2005; **15**: 1469-1475 [PMID: [16354529](#) DOI: [10.1381/096089205774859227](#)]
  - 38 **Melissas J**, Koukouraki S, Askoxylakis J, Stathaki M, Daskalakis M, Perisinakis K, Karkavitsas N. Sleeve gastrectomy: A restrictive procedure? *Obes Surg* 2007; **17**: 57-62 [PMID: [17355769](#) DOI: [10.1007/s11695-007-9006-5](#)]
  - 39 **Melissas J**, Daskalakis M, Koukouraki S, Askoxylakis I, Metaxari M, Dimitriadis E, Stathaki M, Papadakis JA. Sleeve gastrectomy-a "food limiting" operation. *Obes Surg* 2008; **18**: 1251-1256 [PMID: [18663545](#) DOI: [10.1007/s11695-008-9634-4](#)]
  - 40 **Gibson SC**, Le Page PA, Taylor CJ. Laparoscopic sleeve gastrectomy: Review of 500 cases in single surgeon Australian practice. *ANZ J Surg* 2015; **85**: 673-677 [PMID: [24354405](#) DOI: [10.1111/ans.12483](#)]
  - 41 **DuPre CE**, Blair K, Steele SR, Martin MJ. Laparoscopic sleeve gastrectomy in patients with preexisting gastroesophageal reflux disease: A national analysis. *JAMA Surg* 2014; **149**: 328-334 [PMID: [24500799](#) DOI: [10.1001/jamasurg.2013.4323](#)]
  - 42 **Sheppard CE**, Sadowski DC, de Gara CJ, Karmali S, Birch DW. Rates of reflux before and after laparoscopic sleeve gastrectomy for severe obesity. *Obes Surg* 2015; **25**: 763-768 [PMID: [25411120](#) DOI: [10.1007/s11695-014-1480-y](#)]
  - 43 **Carter PR**, LeBlanc KA, Hausmann MG, Kleinpeter KP, deBarros SN, Jones SM. Association between gastroesophageal reflux disease and laparoscopic sleeve gastrectomy. *Surg Obes Relat Dis* 2011; **7**: 569-572 [PMID: [21429818](#) DOI: [10.1016/j.soard.2011.01.040](#)]
  - 44 **Tai CM**, Huang CK, Lee YC, Chang CY, Lee CT, Lin JT. Increase in gastroesophageal reflux disease symptoms and erosive esophagitis 1 year after laparoscopic sleeve gastrectomy among obese adults. *Surg Endosc* 2013; **27**: 1260-1266 [PMID: [23232995](#) DOI: [10.1007/s00464-012-2593-9](#)]
  - 45 **Howard DD**, Caban AM, Cendan JC, Ben-David K. Gastroesophageal reflux after sleeve gastrectomy in morbidly obese patients. *Surg Obes Relat Dis* 2011; **7**: 709-713 [PMID: [21955743](#) DOI: [10.1016/j.soard.2011.08.003](#)]
  - 46 **Rebecchi F**, Allaix ME, Giaccone C, Uglione E, Scozzari G, Morino M. Gastroesophageal reflux disease and laparoscopic sleeve gastrectomy: A physiopathologic evaluation. *Ann Surg* 2014; **260**: 909-914; discussion 914-915 [PMID: [25379861](#) DOI: [10.1097/SLA.0000000000000967](#)]
  - 47 **Rebecchi F**, Allaix ME, Patti MG, Schlottmann F, Morino M. Gastroesophageal reflux disease and morbid obesity: To sleeve or not to sleeve? *World J Gastroenterol* 2017; **23**: 2269-2275 [PMID: [28428706](#) DOI: [10.3748/wjg.v23.i13.2269](#)]
  - 48 **Del Genio G**, Tolone S, Limongelli P, Bruscianno L, D'Alessandro A, Docimo G, Rossetti G, Silecchia G, Iannelli A, del Genio A, del Genio F, Docimo L. Sleeve gastrectomy and development of "de novo" gastroesophageal reflux. *Obes Surg* 2014; **24**: 71-77 [PMID: [24249251](#) DOI: [10.1007/s11695-013-1046-4](#)]
  - 49 **Gorodner V**, Buxhoeveden R, Clemente G, Solé L, Caro L, Grigaites A. Does laparoscopic sleeve gastrectomy have any influence on gastroesophageal reflux disease? Preliminary results. *Surg Endosc* 2015; **29**: 1760-1768 [PMID: [25303918](#) DOI: [10.1007/s00464-014-3902-2](#)]
  - 50 **Georgia D**, Stamatina T, Maria N, Konstantinos A, Konstantinos F, Emmanouil L, Georgios Z, Dimitrios T. 24-h Multichannel Intraluminal Impedance PH-metry 1 Year After Laparoscopic Sleeve Gastrectomy: An Objective Assessment of Gastroesophageal Reflux Disease. *Obes Surg* 2017; **27**: 749-753 [PMID: [27592124](#) DOI: [10.1007/s11695-016-2359-x](#)]
  - 51 **Langer FB**, Bohdjalian A, Shakeri-Leidenmühler S, Schoppmann SF, Zacherl J, Prager G. Conversion from sleeve gastrectomy to Roux-en-Y gastric bypass--indications and outcome. *Obes Surg* 2010; **20**: 835-840 [PMID: [20393810](#) DOI: [10.1007/s11695-010-0125-z](#)]
  - 52 **Juodeikis Ž**, Brimas G. Long-term results after sleeve gastrectomy: A systematic review. *Surg Obes Relat Dis* 2017; **13**: 693-699 [PMID: [27876332](#) DOI: [10.1016/j.soard.2016.10.006](#)]
  - 53 **Sebastianelli L**, Benois M, Vanbiervliet G, Bailly L, Robert M, Turrin N, Gizard E, Foletto M, Bisello M, Albanese A, Santonicola A, Iovino P, Piche T, Angrisani L, Turchi L, Schiavo L, Iannelli A. Systematic Endoscopy 5 Years After Sleeve Gastrectomy Results in a High Rate of Barrett's Esophagus: Results of a Multicenter Study. *Obes Surg* 2019; **29**: 1462-1469 [PMID: [30666544](#) DOI: [10.1007/s11695-019-03704-y](#)]
  - 54 **Mion F**, Tolone S, Garros A, Savarino E, Pelascini E, Robert M, Poncet G, Valette PJ, Marjoux S, Docimo L, Roman S. High-resolution Impedance Manometry after Sleeve Gastrectomy: Increased Intra-gastric Pressure and Reflux are Frequent Events. *Obes Surg* 2016; **26**: 2449-2456 [PMID: [26956879](#) DOI: [10.1007/s11695-016-2127-y](#)]
  - 55 **Altieri MS**, Shroyer KR, Pryor A, Pagnotti GM, Ete Chan M, Talamini M, Telem DA. The association between sleeve gastrectomy and histopathologic changes consistent with esophagitis in a rodent model. *Surg Obes Relat Dis* 2015; **11**: 1289-1294 [PMID: [26048523](#) DOI: [10.1016/j.soard.2015.01.012](#)]
  - 56 **Klaus A**, Weiss H. Is preoperative manometry in restrictive bariatric procedures necessary? *Obes Surg* 2008; **18**: 1039-1042 [PMID: [18386106](#) DOI: [10.1007/s11695-007-9399-1](#)]
  - 57 **Lazoura O**, Zacharoulis D, Triantafyllidis G, Fanariotis M, Sioka E, Papamargaritis D, Tzovaras G. Symptoms of gastroesophageal reflux following laparoscopic sleeve gastrectomy are related to the final shape of the sleeve as depicted by radiology. *Obes Surg* 2011; **21**: 295-299 [PMID: [21165778](#) DOI: [10.1007/s11695-010-0339-0](#)]
  - 58 **Hayat JO**, Wan A. The effects of sleeve gastrectomy on gastro-esophageal reflux and gastro-esophageal motility. *Expert Rev Gastroenterol Hepatol* 2014; **8**: 445-452 [PMID: [24580041](#) DOI: [10.1586/17474124.2014.888951](#)]
  - 59 **Himpens J**, Dapri G, Cadière GB. A prospective randomized study between laparoscopic gastric banding and laparoscopic isolated sleeve gastrectomy: Results after 1 and 3 years. *Obes Surg* 2006; **16**: 1450-1456 [PMID: [17132410](#) DOI: [10.1381/096089206778869933](#)]
  - 60 **Baumann T**, Kuesters S, Grueneberger J, Marjanovic G, Zimmermann L, Schaefer AO, Hopt UT, Langer M, Karcz WK. Time-resolved MRI after ingestion of liquids reveals motility changes after laparoscopic sleeve gastrectomy--preliminary results. *Obes Surg* 2011; **21**: 95-101 [PMID: [21088924](#) DOI: [10.1007/s11695-010-0317-6](#)]
  - 61 **Keidar A**, Appelbaum L, Schweiger C, Elazary R, Baltasar A. Dilated upper sleeve can be associated with severe postoperative gastroesophageal dysmotility and reflux. *Obes Surg* 2010; **20**: 140-147 [PMID: [20393810](#) DOI: [10.1007/s11695-010-0125-z](#)]

- 19949885 DOI: 10.1007/s11695-009-0032-3]
- 62 **Dapri G**, Cadière GB, Himpens J. Laparoscopic seromyotomy for long stenosis after sleeve gastrectomy with or without duodenal switch. *Obes Surg* 2009; **19**: 495-499 [PMID: 19169764 DOI: 10.1007/s11695-009-9803-0]





Published By Baishideng Publishing Group Inc  
7041 Koll Center Parkway, Suite 160, Pleasanton, CA 94566, USA  
Telephone: +1-925-2238242  
Fax: +1-925-2238243  
E-mail: [bpgoffice@wjgnet.com](mailto:bpgoffice@wjgnet.com)  
Help Desk: <http://www.f6publishing.com/helpdesk>  
<http://www.wjgnet.com>

